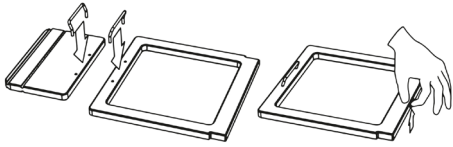


Get started with **Standfriend**

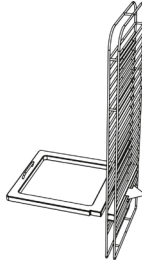
Standfriend is designed to be easy to handle. You take out and remove your Standfriend in a few steps – and looks good against the wall when you are not using it. The folded, flat design does not take up much space. Hang it on the wall or put it away when you don't need it.

Mounting your Standfriend

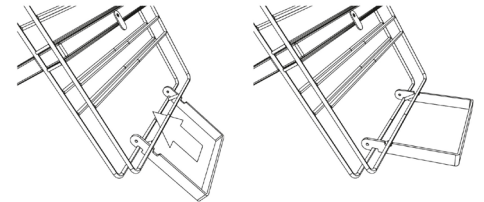
1



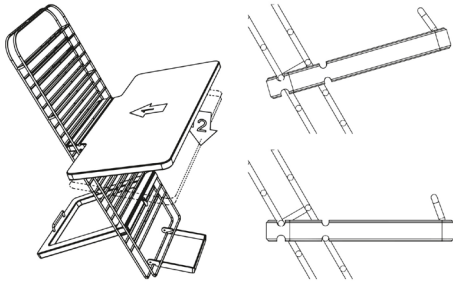
2



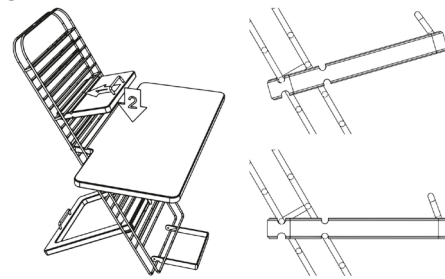
3



4



5

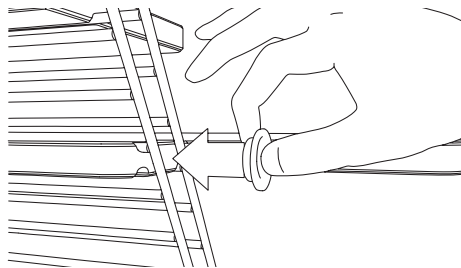


Stabilize your Standfriend

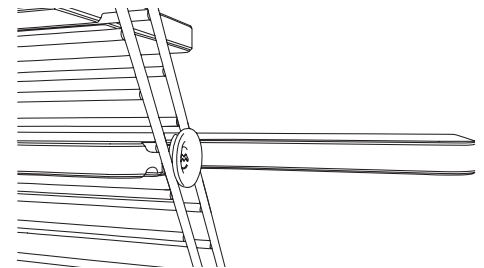
1



2

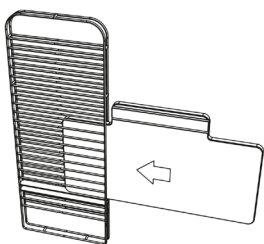


3

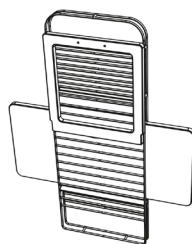


Storing your Standfriend

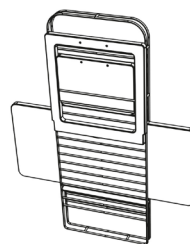
1



2



3



4

